

**Fibreclean**<sup>®</sup>  
Hygiene & Food Safety Equipment

# Shadow Boards

Market leading, bespoke, full colour shadow board systems to enhance your workplace

Another innovative  
Hygiene Technologies brand

**Hygiene**<sup>®</sup>  
**Technologies**  
Smarter Cleaning Systems



## MARKET LEADING, BESPOKE, FULL COLOUR SHADOW BOARD SYSTEMS TO ENHANCE YOUR WORKPLACE

'A place for everything and everything in its place'

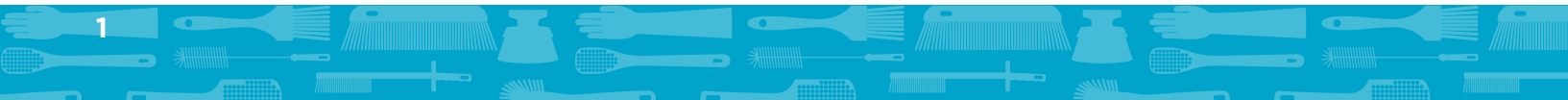
that's the promise behind our fully customisable, durable and easy to clean Fibreclean Shadow Boards.

## INDUSTRY-LEADING FIBRECLEAN SHADOW BOARDS

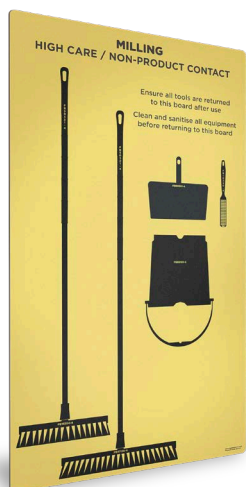
### A tailored hygiene solution

Fibreclean Shadow Boards are completely customisable. The size and orientation of the board, the colours of the background and shadows, your logo and messaging, the utensils and tools you hang on them, and even where on the board they hang, is completely up to you. We're happy to work with your engineers for special requests to make a shadow board that's perfect for your requirements.

Plus because they're made from a board with zero moisture absorption, then coated in an anti-scuff laminate, Fibreclean Shadow Boards are extremely durable and easy to clean.



# WHY CHOOSE FIBRECLEAN SHADOW BOARDS



## Be more compliant

Are your auditors complaining that your tools are touching the wall?

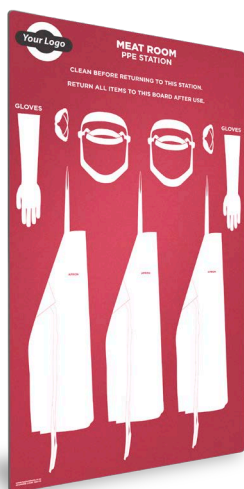
Auditors are more regularly looking for cleaning tools to be visual and for everything to be in the right place.



## Organisational excellence

Ever wonder if the food contact brush sometimes end up on the floor?

Supporting initiatives such as: contamination control, 5S, lean manufacturing, continuous improvement.



## Promote policies & safety instructions

Do you feel like you're constantly repeating yourself?

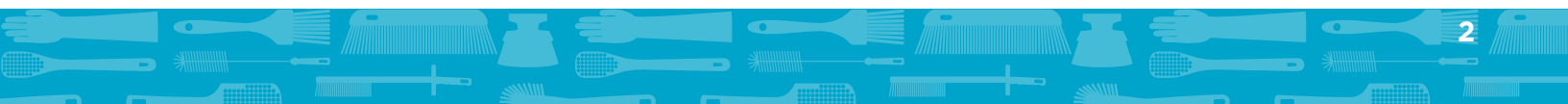
Display your brand message and company policies in a highly visible way - to staff, auditors and customers.



## Reduce costs and downtime

Sick of trying to find the tools you need to do your job?

Correct storage will reduce the risk of a foreign-matter incident and the cost of replacing missing/damaged tools.



# IMAGINE YOUR BOARD

If you can dream it, we can print it. From full board size pictures to intricate tables, think of what works best for you.

Visit [hygienetech.co.nz/FibreClean-Shadow-Boards-Gallery/](http://hygienetech.co.nz/FibreClean-Shadow-Boards-Gallery/) to get some inspiration or ideas.

We have a range of board shapes and sizes that fit most situations - see the relative sizes below. All of our boards come with Standard Laminate unless White Board Laminate has been requested.



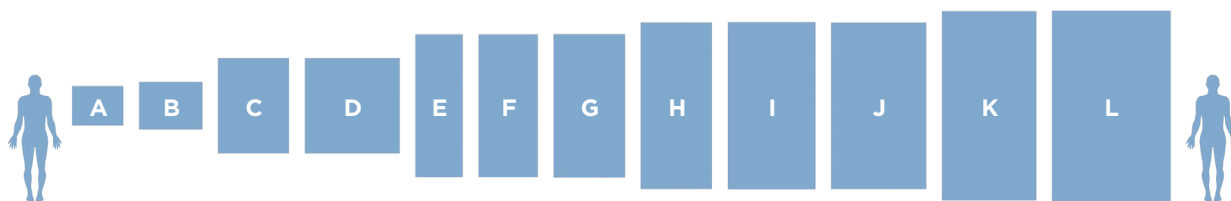
Board B



Board G



Board J



# LAMINATE OPTIONS



## Standard Laminate

This laminate film has been chemical and scratch tested, to ensure the long-life of your Fibreclean Shadow Board whatever your environment.

## White Board Laminate

This transparent matt laminate film is extremely scratch-resistant and perfectly suited for production boards or as an addition to Shadow Boards, that require written messages to be communicated between shifts or team members.

## HANGING OPTIONS



### Single Hook / Double Hook - Stainless steel

Heavy duty stainless steel hooks in single and double configuration. These can be mounted anywhere on the board, giving flexibility to fit more items on the board. Can be used to hang items with hanging holes in them, or to horizontally support items with no hanging hole. In time all hook types will be double bolted and the rivet option will be discontinued.



### Safety design

With the prong facing inwards, there is no risk of serious injury if anyone trips and falls against the hook. Also means the tool hangs out from and doesn't touch the board.

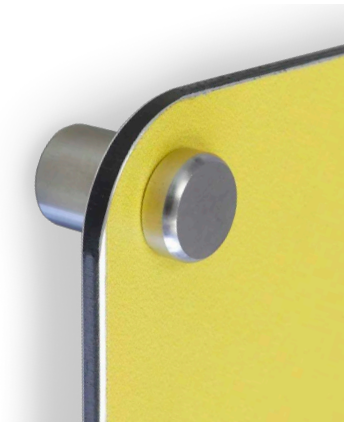


### Clip & bolt set (Bulldog clip)

For hanging items like gloves – Comes as a set with mounting bolt & nut for attaching to the board.



## MOUNTING OPTIONS



### Stand-off

Stainless stand-off mounts that are attached to the wall structure. Can hose water or blow compressed air down behind board to clean, or can be easily removed for manual scrubbing.



### Magnet

The new magnet option allows you to attach and detach your Shadow Board to any steel or coated steel surface, without drilling holes into your walls.



### Trolley

Attached to a custom designed stainless steel trolley or frame with or without swivelling nylon castors.



### Left Hinged or Right Hinged

For high hygiene areas to allow for easy access to clean behind the board.

### Direct Fixed

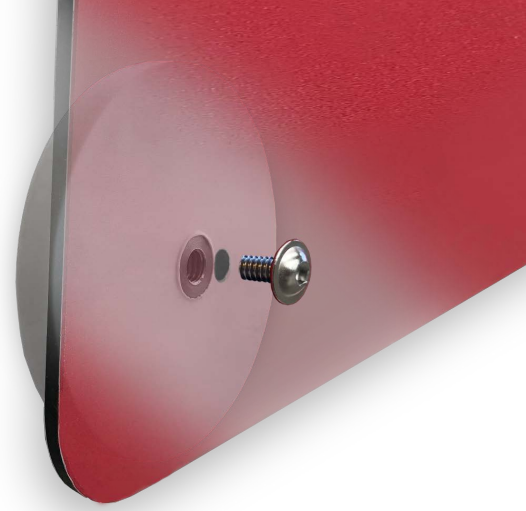
Lowest cost board and can be mounted to most wall types. A suitable sealant can be placed around the board edge for hygiene purposes if required. Method of mounting board to the wall is decided by customer.

# ORDER YOUR FIBRECLEAN SHADOW BOARDS IN 4 EASY STEPS!

## STEP 1.

Decide how to mount your shadow board

We have a wide selection from stand-offs, magnets, mobile trollies, hinged and direct fixed.



## STEP 2.

Decide how to hang your tools on the board

We've thought of the solution for you, from stainless steel hooks and clips to storage bins.



## STEP 3.

Tell us what headings and messages you need

Let us know if you have special requirements, otherwise our expert team will design a layout to best suit your board size and needs.



## STEP 4.

Confirm pricing and delivery details

A member of our team will prepare an estimate. Once this has been accepted our design team will be in touch with you, to finalise the design.





**To place an order or to find out more,  
contact us at:**

- [www.hygienetech.co.nz](http://www.hygienetech.co.nz)
- [solutions@hygienetech.co.nz](mailto:solutions@hygienetech.co.nz)
- 0800 (REAL CLEAN) 732 525
- 28 Rangitane Road, Whakatu, Hastings

